



COTABAMBAS
PROJECT

TSX-V: PML

BVL: PML

OTC: POROF

FSE: PZM

PERU'S NEXT COPPER/GOLD MINE

A BILLION TONNE DEPOSIT WITH 1.2% CUEQ HIGH GRADE COMPONENT

Corporate Presentation

June 2026

Forward Looking Statements



CAUTION REGARDING FORWARD LOOKING STATEMENTS: Information and statements contained in this presentation that are not historical facts are “forward-looking information” within the meaning of applicable Canadian securities legislation and involve risks and uncertainties.

Examples of forward-looking information and statements contained in this presentation include information and statements with respect to:

- Panoro delineating growth potential at the Cotabambas Project, while optimizing project economics;
- mineral resource estimates and assumptions; and
- the PEAs, including, but not limited to, base case parameters and assumptions, forecasts of net present value, internal rate of return and payback.

Various assumptions or factors are typically applied in drawing conclusions or making the forecasts or projections set out in forward-looking information. In some instances, material assumptions and factors are presented or discussed in this news release in connection with the statements or disclosure containing the forward-looking information and statements. You are cautioned that the following list of material factors and assumptions is not exhaustive. The factors and assumptions include, but are not limited to, assumptions concerning: metal prices and by-product credits; cut-off grades; short and long term power prices; processing recovery rates; mine plans and production scheduling; process and infrastructure design and implementation; accuracy of the estimation of operating and capital costs; applicable tax and royalty rates; open-pit design; accuracy of mineral reserve and resource estimates and reserve and resource modeling; reliability of sampling and assay data; representativeness of mineralization; accuracy of metallurgical test work; and amenability of upgrading and blending mineralization.

Forward-looking statements are subject to a variety of known and unknown risks, uncertainties and other factors which could cause actual events or results to differ materially from those expressed or implied by the forward-looking statements, including, without limitation:

- risks relating to metal price fluctuations
- risks relating to estimates of mineral resources, production, capital and operating costs, decommissioning or reclamation expenses, proving to be inaccurate
- the inherent operational risks associated with mining and mineral exploration, development, mine construction and operating activities, many of which are beyond Panoro’s control
- risks relating to Panoro’s or its partners’ ability to enforce legal rights under permits or licenses or risk that Panoro or its partners will become subject to litigation or arbitration that has an adverse outcome
- risks relating to Panoro’s or its partners’ projects being in Peru, including political, economic and regulatory instability
- risks relating to the uncertainty of applications to obtain, extend or renew licenses and permits
- risks relating to potential challenges to Panoro’s or its partners’ right to explore or develop projects
- risks relating to mineral resource estimates being based on interpretations and assumptions which may result in less mineral production under actual circumstances
- risks relating to Panoro’s or its partners’ operations being subject to environmental and remediation requirements, which may increase the cost of doing business and restrict operations
- risks relating to being adversely affected by environmental, safety and regulatory risks, including increased regulatory burdens or delays and changes of law
- risks relating to inadequate insurance or inability to obtain insurance
- risks relating to the fact that Panoro’s and its partners’ properties are not yet in commercial production;
- risks relating to fluctuations in foreign currency exchange rates, interest rates and tax rates
- risks relating to Panoro’s ability to raise funding to continue its exploration, development, and mining activities; and
- counterparty risk under Panoro’s agreements.

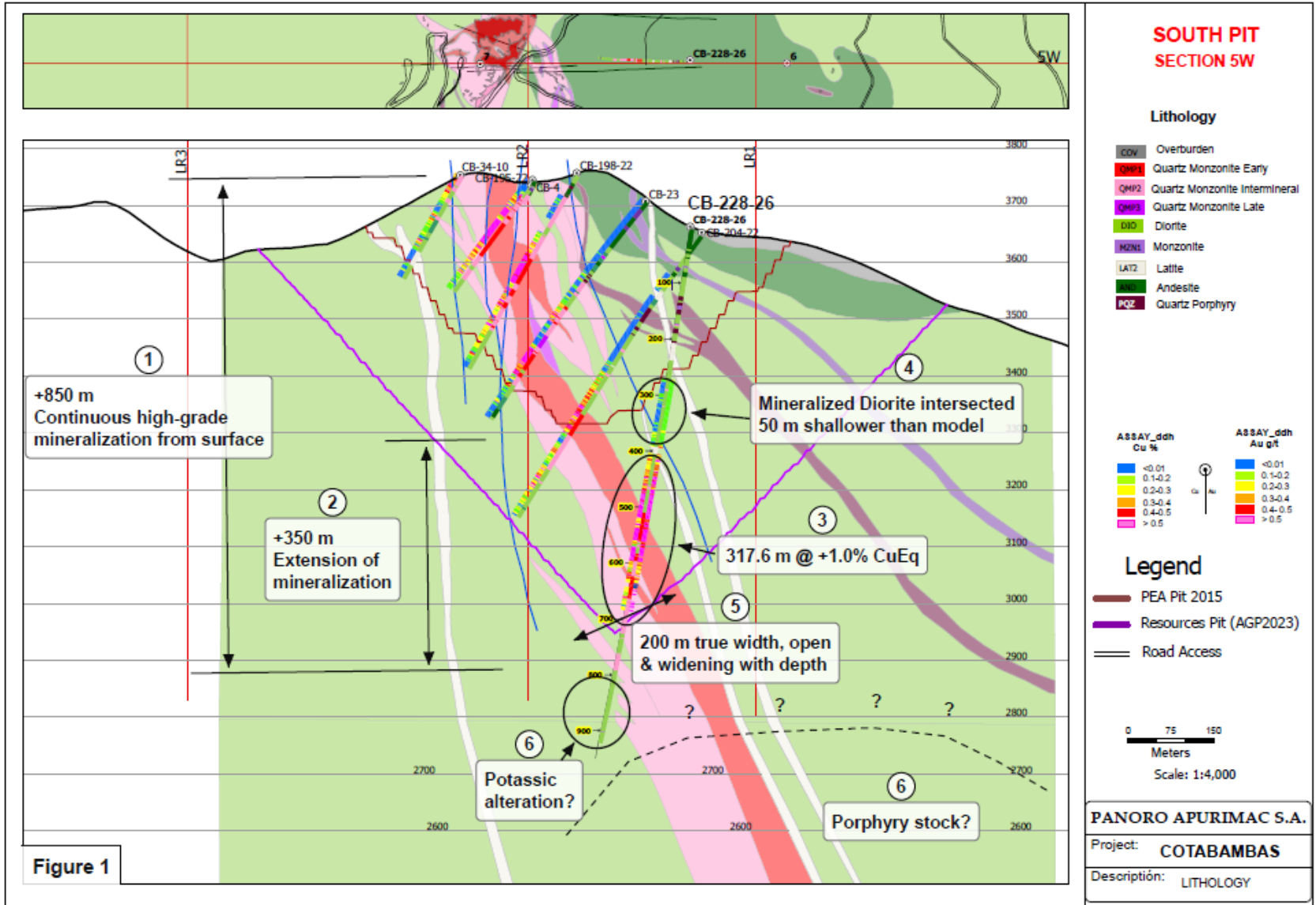
This list is not exhaustive of the factors that may affect the forward-looking information and statements contained in this news release. Should one or more of these risks and uncertainties materialize, or should underlying assumptions prove incorrect, actual results may vary materially from those described in the forward-looking information. The forward-looking information contained in this news release is based on beliefs, expectations, and opinions as of the date of this news release. For the reasons set forth above, readers are cautioned not to place undue reliance on forward-looking information. Panoro does not undertake to update any forward-looking information and statements included herein, except in accordance with applicable securities laws.

Highlights from drill hole CB-228 at South Pit



- **Delineating continuous mineralization from surface to 850 m depth**
 - Intersected **317.6 m at 1.04% CuEq¹** (0.46% Cu, 0.45 g/t Au and 3.19 g/t Ag); including
 - **162.0 m at 1.54% CuEq¹** (0.65% Cu, 0.70 g/t Au and 4.24 g/t Ag)
 - **85.9 m at 1.36% CuEq¹** (0.56% Cu, 0.63 g/t Au and 3.51 g/t Ag)
 - **66.1 m at 1.92% CuEq¹** (0.83% Cu, 0.85 g/t Au and 5.58 g/t Ag)
 - within a broader interval of **487.4 m at 0.80% CuEq¹** (0.36% Cu, 0.34 g/t Au and 2.56 g/t Ag)
- **Mineralization intersected 50 m shallower than expected, extended over 350 m down dip and growing wider with depth**
 - Shallower intersection indicates potential to convert waste areas to mineralization, thereby increasing the resource and further reducing the low strip ratio
 - Mineralization is open along strike to the southwest pit target and at depth
 - Overall mineral intersected by Drillhole CB-228 will be incorporated as new inferred resources in the next MR estimation.
- **Intersected potassic alteration near the bottom of the hole**
 - Potentially indicates nearness of the source porphyry at depth
 - Mineralization intersected in both the quartz monzonite porphyry and adjacent host diorite
 - Appearance of hydrothermal breccias and igneous breccias with copper and gold mineralization indicate significant widening of the system and expanded resource potential requiring further exploration
- **Expanding drill program to 45,000 m**
 - Targeting additional drilling along strike, including at the:
 - NE Pit Target;
 - Area between North and South Pits;
 - SW Pit Target
 - Other clustered high-grade targets on the 165 square km property
 - The second drill hole at the South Pit is underway
 - A second drill will arrive at site in June with a further 2 drills to arrive this summer
 - An aggressive deep and shallow geophysics program will be initiated to support the drilling exploration of the high-grade continuity at depth and to the southwest.
 - Fully funded following closing of C\$21 million equity financing

Cotabambas South Pit Cross Section



The High-Grade Strategy

Establish the **Cotabambas Project** scale that Panoro can develop

1. Focus on the High-Grade component of the resource

- 222 million tonnes
- 1.2% CuEq
- Strip ratio less than 1.0

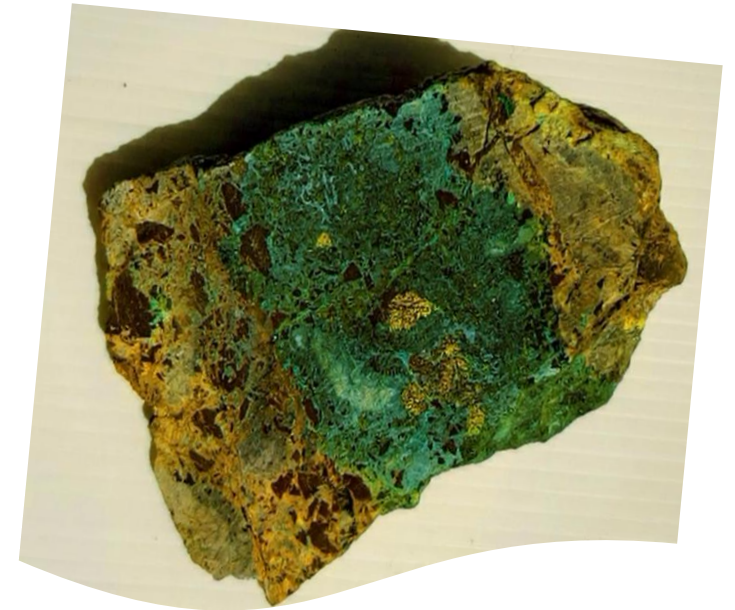
2. Drilling Programs to:

- **Define** extent of high grades along strike and at depth
- **Upgrade** High-Grade component to indicated categories
- **Test** clustered targets for High-Grade potential

3. Scope a developable scale project

- Efficient capital intensity
- Short pay back period
- Minimize project footprint
- Streamline permitting

Preserving Growth Optionality



Strategic Project Location

Southern Peru Copper Cluster



HEART OF PERU MINING CLUSTER

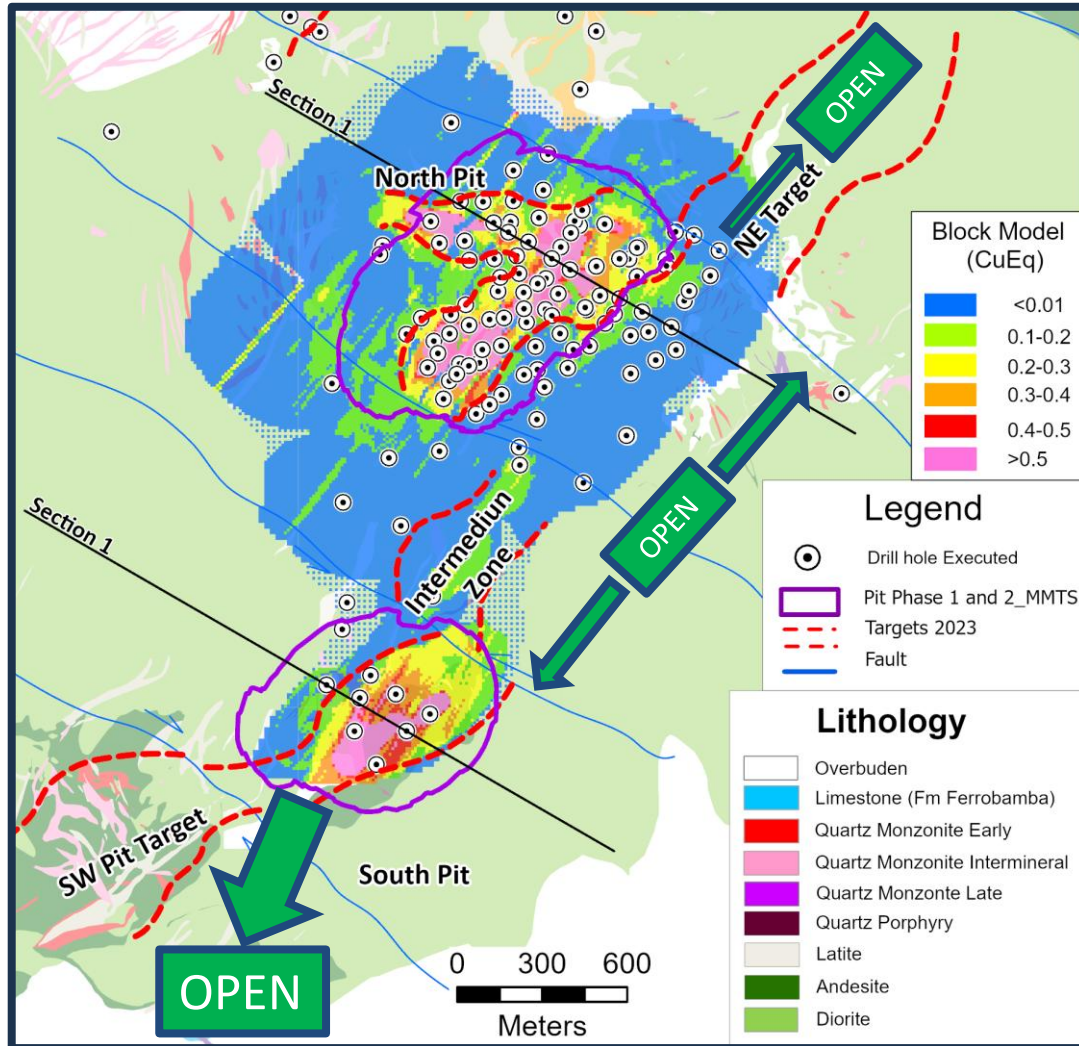
- Global copper mining sector heavily invested in southern Peru
- 12 large scale open pit copper mines/projects
- **Panoro** only exploration company with 100% control of advanced copper project
- Infrastructure in place:
 - Roads, Rail, Power, Water Supply, Ports

North Pit & South Pit

Contain 100% of 1 Billion Tonne Resource



COTABAMBAS
PROJECT



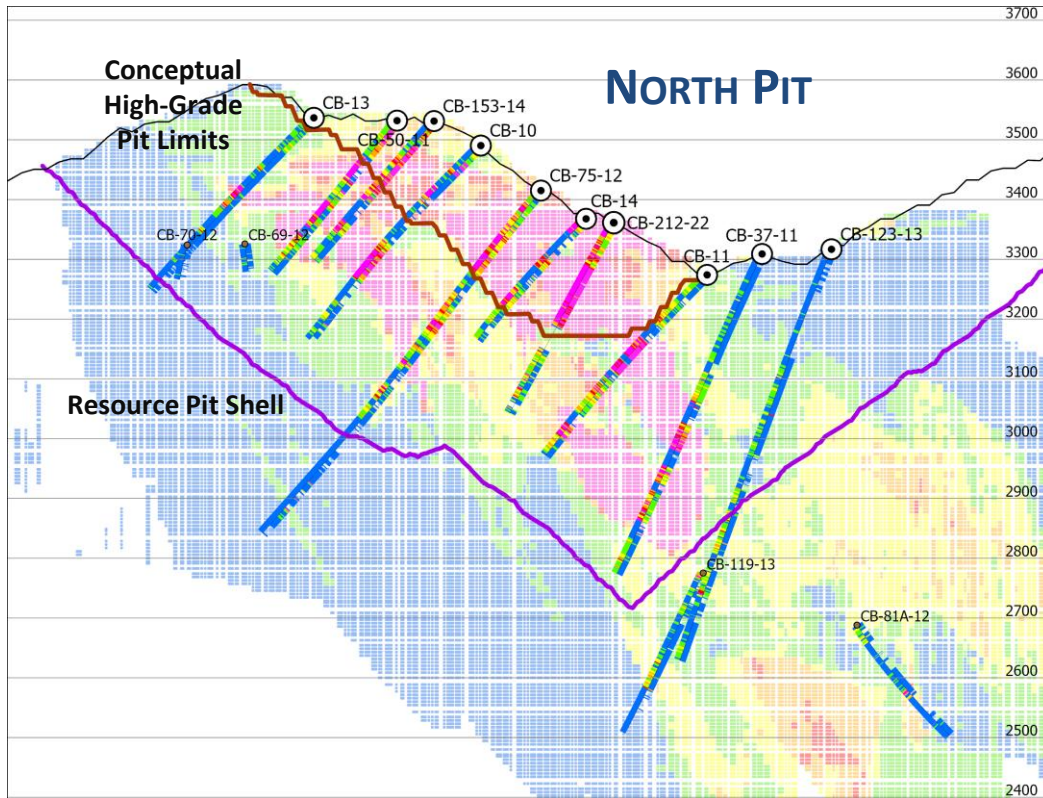
- 1.0 billion tonne resource
- Low strip ration of 1.3:1
- High-Grade component
 - 222 million tonnes at 1.2% CuEq
- High-Grade corridor identified
 - Open along strike
 - Open to south of South Pit
 - Open between the pits

North Pit & South Pit Sections

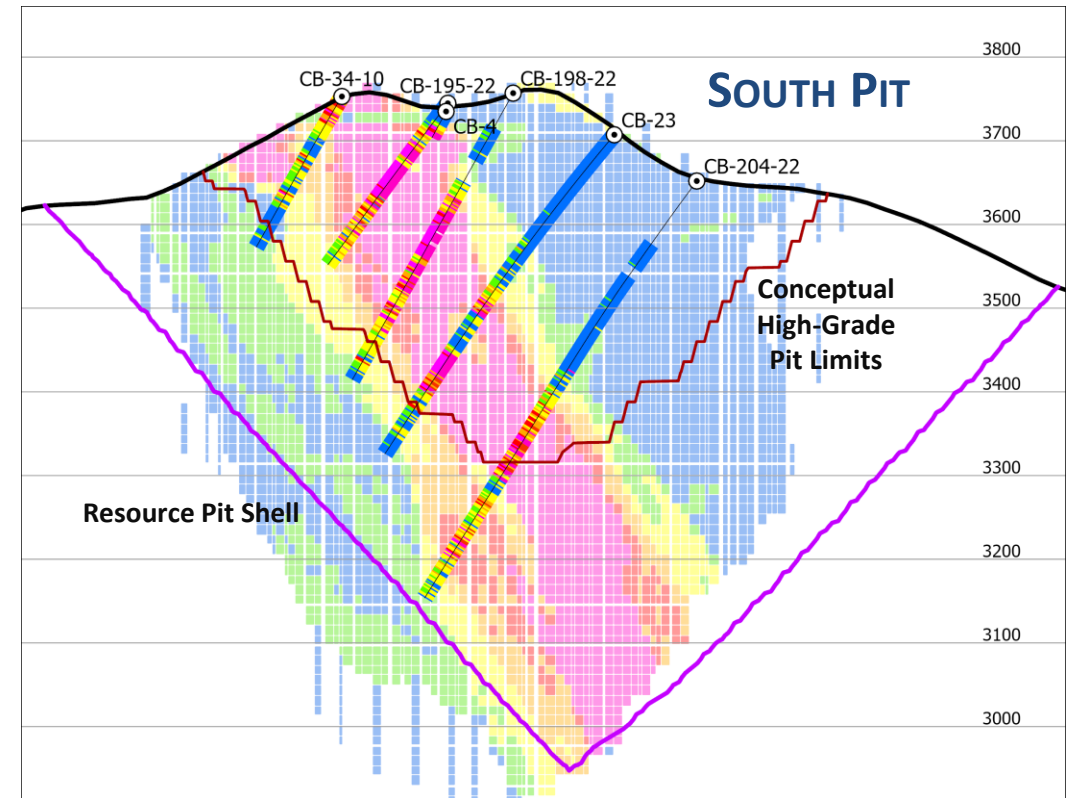
Continuity and Growth Potential



COTABAMBAS
PROJECT



- Continuity of High-Grade
- High-Grade at Surface
- High-Grade Open at Depth



- High-Grade Starter Pit Potential
- High-Grade Open Below PIT
- Limited Pre-stripping

Continuous High-Grade Exposed @ Surface and Open @ Depth

Mineral Resource Overview

Effective 2024



1.0 BILLION TONNE TARGET ACHIEVED

507.3 Mt @ 0.34% Cu, 0.20 g/t Au, 2.42 g/t Ag, Indicated

- 0.61% CuEq¹
- 3.75 B lbs Cu
- **3.29 M oz Au**
- 39.45 M oz Ag

496.0 Mt @ 0.27% Cu, 0.17 g/t Au, 2.53 g/t Ag, Inferred

- 0.51% CuEq¹
- 2.96 B lbs Cu
- **2.69 M Oz Au**
- 40.9 M oz Ag

12.5 Billion Pounds CuEq (Contained)¹; or

15.6 Million Ounces AuEq_q (Contained)¹

HIGH-GRADE COMPONENT OF MINERAL RESOURCE

129.0 Mt @ 0.70% Cu, 0.44 g/t Au, 4.12 g/t Ag, Indicated

- 1.29% CuEq¹; or
- 1.10 g/t AuEq
- 1.99 Blbs Cu
- **1.83 Moz Au**
- 17.09 Moz Ag

93.1 Mt @ 0.59% Cu, 0.41 g/t Au, 5.31 g/t Ag, Inferred

- 1.17% CuEq, or
- 1.00 g/t AuEq
- 1.22 Blbs Cu
- **1.23 Moz Au**
- 15.90 Moz Ag

0.65:1 WASTE TO ORE RATIO

1. CuEq calculated using US\$5.00/lb Cu, US\$4,000/oz Au, and US\$60/oz Ag

Mineral Resource Overview

Effective 2024



Total Resources									
Classification	Tonnes (Mt)	Metal Grade				Contained Metal			
		Cu (%)	Au (g/t)	Ag (g/t)	CuEq (%)	Cu (Mlbs)	Au (Moz)	Ag (Moz)	CuEq (Mlbs)
Indicated	507.3	0.34	0.20	2.42	0.61	3,753	3.29	39.45	6,858
Inferred	496.0	0.27	0.17	2.53	0.51	2,961	2.69	40.86	5,603

High Grade Core									
Classification	Tonnes (Mt)	Metal Grade				Contained Metal			
		Cu (%)	Au (g/t)	Ag (g/t)	CuEq (%)	Cu (Mlbs)	Au (Moz)	Ag (Moz)	CuEq (Mlbs)
Indicated	129.0	0.70	0.44	4.12	1.29	1,990	1.83	17.09	3,659
Inferred	93.1	0.59	0.41	5.31	1.17	1,220	1.23	15.90	2,395

1. CuEq calculated using US\$5.00/lb Cu, US\$4,000/oz Au, and US\$60/oz Ag

2026 Work Program

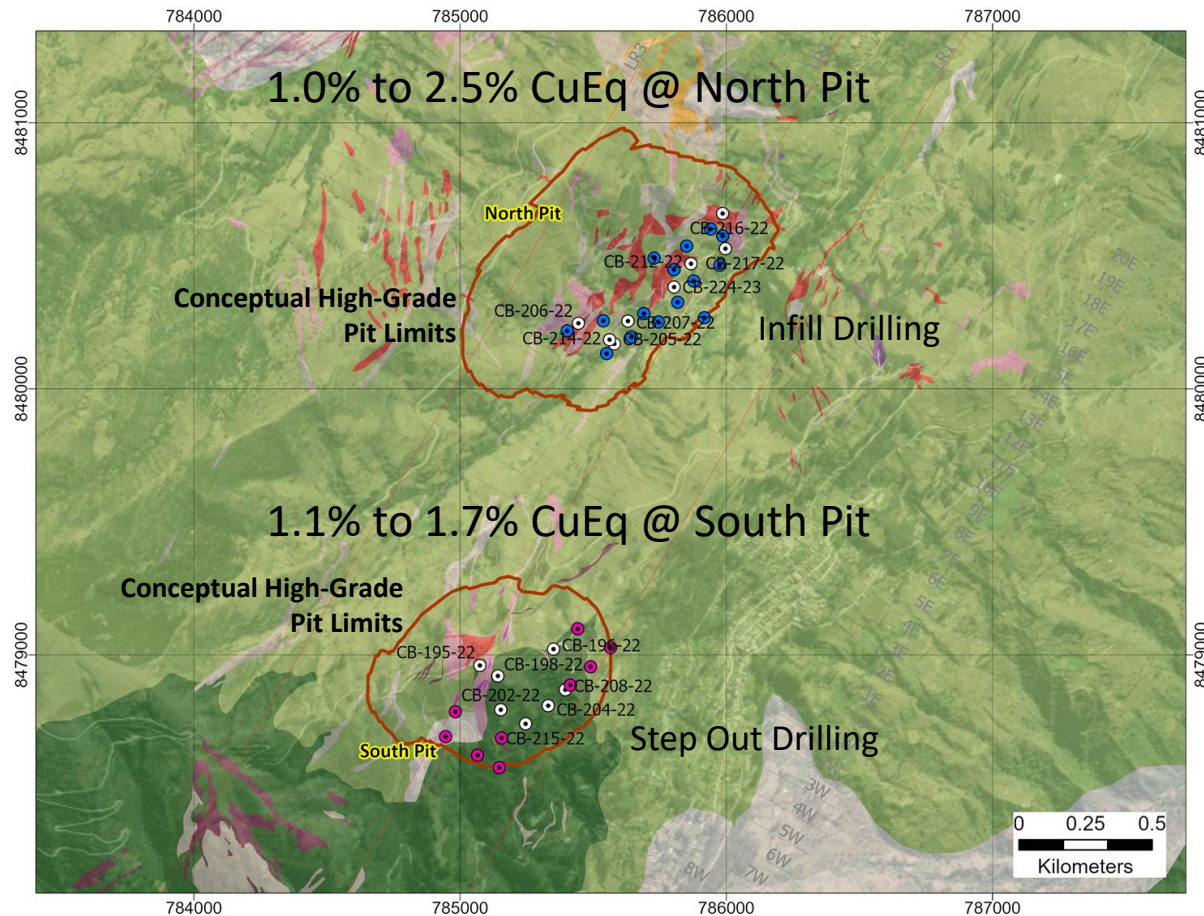
- **15,000 m total at C\$8.2 million, Funded** → Growing to +30,000 m post closing \$21.0 Financing
- **DRILLING PROGRAM PRIORITIES**
 - Stepout Drilling at South Pit / **5,000 m** / **GROW** High-Grade Resource
 - Infill Drilling at North Pit / **5,000 m** / **UPGRADE** to Indicated Category
 - Exploration Drilling at Clustered Targets / **5,000 m** / **TEST** for additional High-Grade potential
- **Drilling to Start in April**
 - Up to three (3) drill rigs → Growing to five (5) rigs in 2026
 - Drilling to end of 2026
- **Metallurgical Testing of High-Grade**
 - Target increased recoveries
- **Engineering Studies to feed future PEA and PFS**



Key Priorities - Stepout and Infill Drilling



Previous High-Grade Intercepts



	MBAS CT							
	Drillhole	From (m)	To (m)	Intersection (m)	Cu (%)	Au (g/t)	Ag (g/t)	CuEq ² (%)
NORTH PIT	CB-205	43.7	122.9	79.2	0.65	0.44	5.19	1.30%
	CB-206	3.8	345.4	341.7	0.56	0.40	2.75	1.10%
	CB-207	117.4	207.1	89.7	0.56	0.51	4.06	1.30%
	CB-212	0.0	74.0	74.0	0.78	0.33	2.80	1.30%
	CB-213	8.2	163.6	155.4	0.62	0.34	4.43	1.20%
		202.3	309.4	107.1	0.87	0.77	4.24	2.00%
	CB-214	91.4	209.1	117.7	1.21	0.82	11.36	2.50%
		231.6	245.6	14.0	0.48	0.96	20.20	2.20%
	CB-216	49.5	125.4	75.9	0.80	0.13	2.48	1.00%
	CB-212a	0.0	198.6	198.6	0.83	0.74	3.80	1.90%
CB-217	21.6	55.6	34.0	0.86	0.10	1.19	1.00%	
CB-224	3.0	319.9	316.9	0.72	0.50	4.01	1.50%	

	MBAS CT							
	Drillhole	From (m)	To (m)	Intersection (m)	Cu (%)	Au (g/t)	Ag (g/t)	CuEq ² (%)
SOUTH PIT	CB-195	35.0	230.8	195.8	0.55	0.52	2.88	1.30%
	CB-196	194.2	214.7	20.5	0.65	0.73	3.91	1.70%
		257.7	280.8	23.2	0.60	0.49	3.41	1.30%
	CB-198	123.0	382.9	260.0	0.43	0.61	2.72	1.30%
	CB-202	287.6	340.4	52.8	0.48	0.44	3.50	1.10%
	CB-204	332.8	427.8	95.0	0.44	0.45	3.13	1.10%
	CB-208	350.0	416.5	66.5	0.44	0.54	3.68	1.20%
	CB-215	397.5	511.5	114.0	0.44	0.60	2.62	1.30%

Mineral Resource Growth Potential

Resource and District Scale



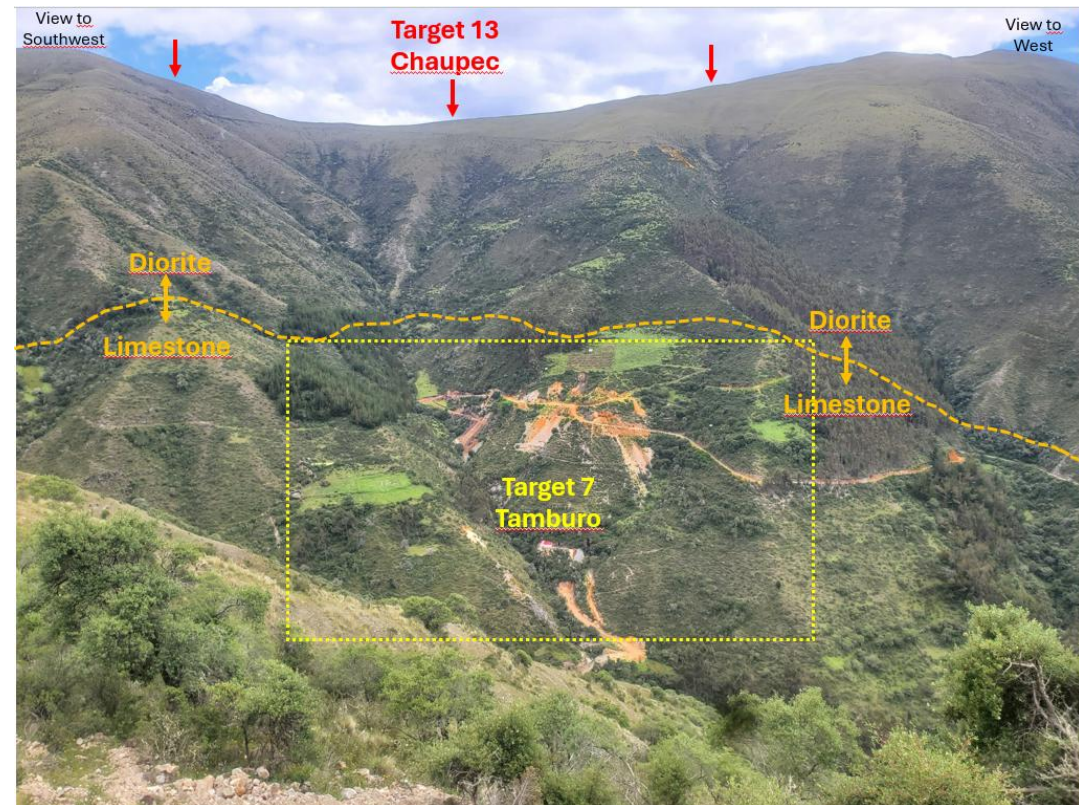
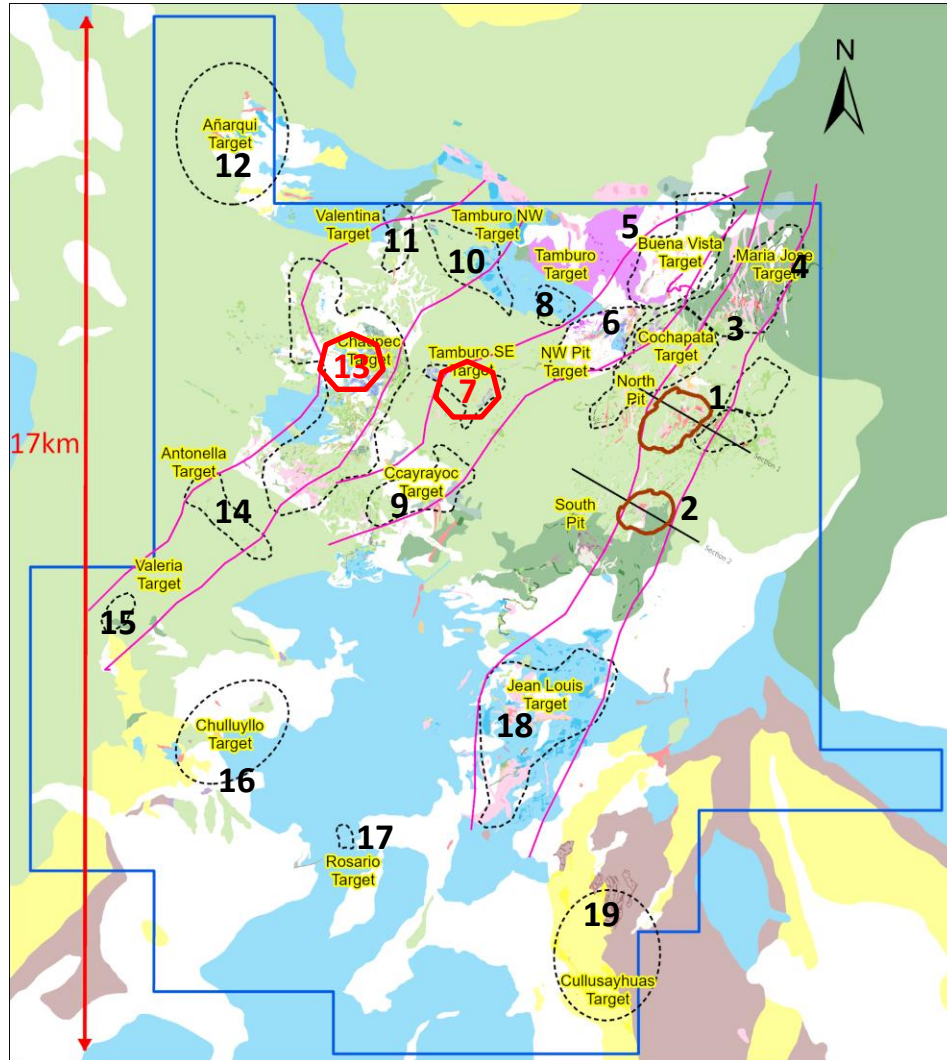
COTABAMBAS
PROJECT

17 of 19 Targets yet to test

Exploration Drill Targets for 2026

Target 7 – Tamburo
Skarn at High-Grade

Target 13 – Chaupec
Skarn at High-Grade

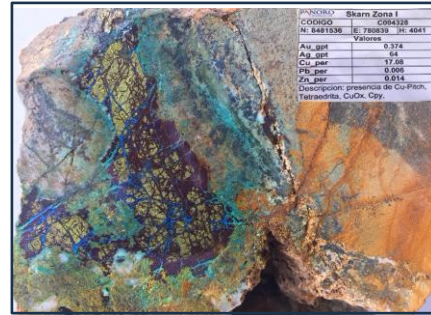
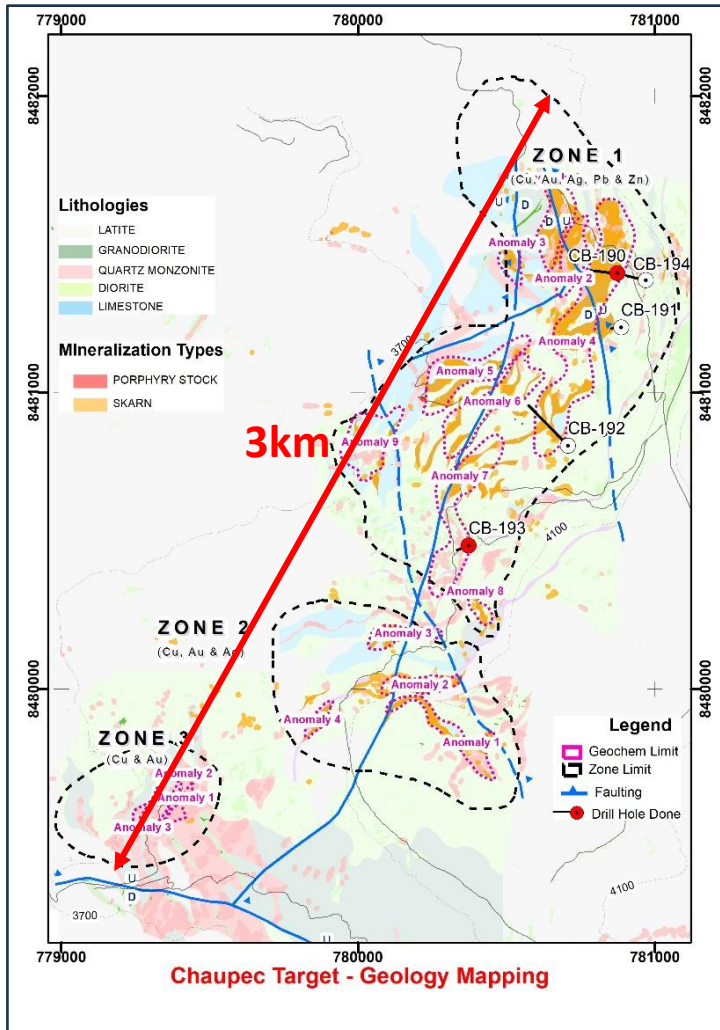


Target 13 - Chaupec

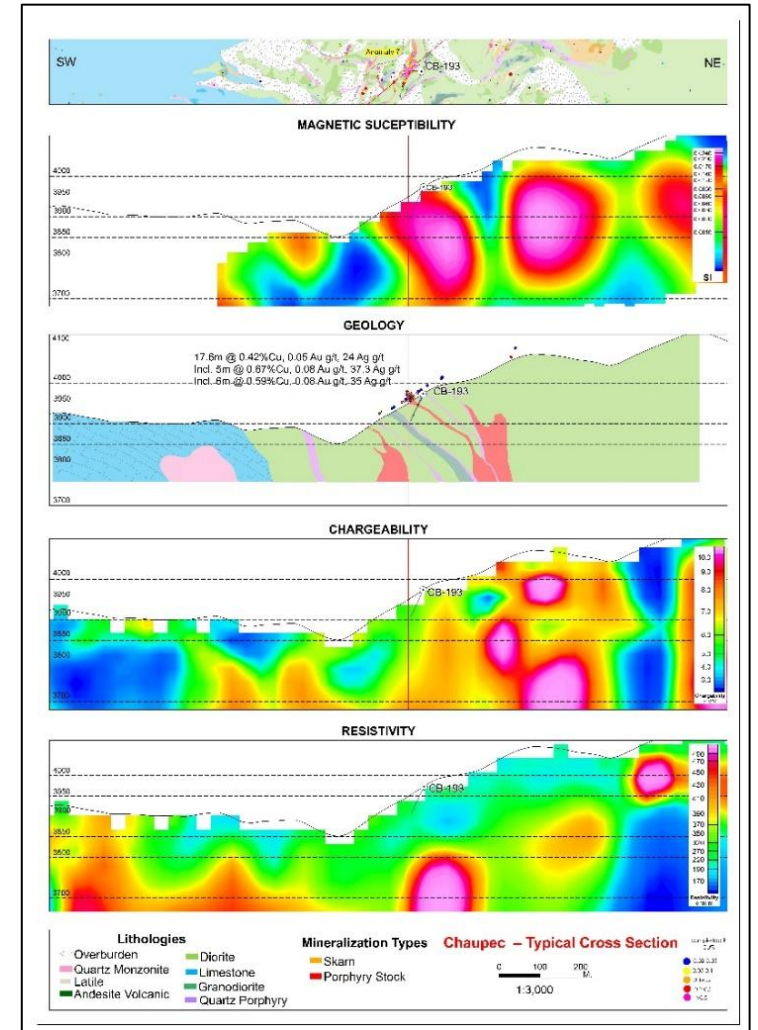
High Grade & Resource Growth Potential



COTABAMBAS
PROJECT



- Skarn mapped along 3 km of strike
 - Three Zones
 - 15 Anomalies
 - Surface samples of:
 - + 7% Cu
 - + 500 g/t Ag
- Geophysical anomalies indicating:
 - Porphyry stock 50m to 100m from surface
- Five shallow drill holes intersected:
 - Mineralization within host Diorite
 - 0.60 % Cu, 39 g/t Ag
 - Porphyry mineralization
 - 0.66% Cu, 40 g/t Ag

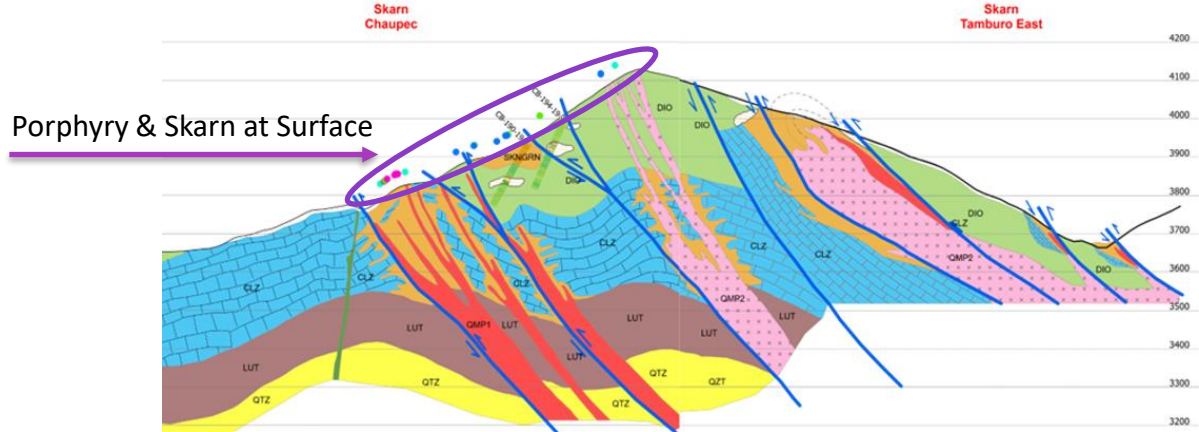


Target 7 - Tamburo

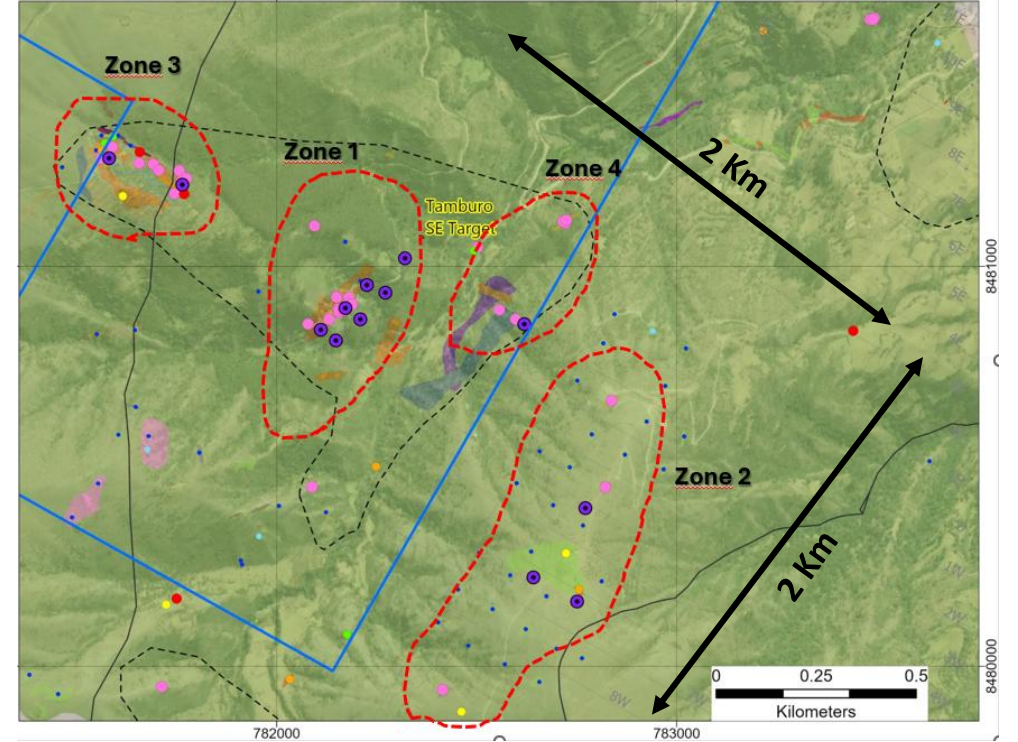
High Grade & Resource Growth Potential



COTABAMBAS
PROJECT



HIGH GRADE SKARN POTENTIAL TO DEPTH



Four zones of Mineralization sampled at surface:

- Zone 1: 19% Cu, 65 g/t Ag, 0.17 g/t Au
- Zone 2: 7% Cu, 100 g/t Ag, 0.68 g/t Au
- Zone 3: 11% Cu, 27 g/t Ag, 0.21 g/t Au
- Zone 4: 10% Cu, 91 g/t Ag, 0.07 g/t Au



PANDORO		COTABAMBAS PROJECT	
CODE	TYPE OF SAMPLE	SAMPLING METHOD	LOCATION
CLZ-01	ROCK CHIP	Hand-dug	CLZ-01
TARGET:	DATE:	ASSAYS:	ANALYST:
PANDORO	20/05/2018	0.130	54
		12.29	0.056
DESCRIPCION: Skarn magnésico y ferruginoso, con sulfuros de cobre, plata y oro. Se observan minerales de sulfuro de cobre y plata. Ley en molinos y alba. Atención: no ingerir. Mantener en contacto con el agua.			



Fig. 03.-1m

Expanded Exploration Programs

\$21 Million Financing Completed May 2026

- Drilling Program Grow to 45,000 m / 5 drills
 - STEP-OUT DRILLING – Along 3 Km of Strike
 - Between North and South Pits
 - Northeast Pit Target
 - Southwest Pit Target
 - EXPLORATION
 - Southwest Pit Target
- Geophysics
 - Target 7
 - Southwest Pit Target
- Deep Geophysics at North and South Pit



Cotabambas Project Design Concept

Design a High Grade Mine Panoro can Build



- Target 20 ktpd to 30 ktpd High Grade mine plan → Revisit Project Scale as High-Grade Component is Expanded
- Capital efficient, targeting US\$500 M to US\$700 M Initial Capital Cost
- Produce a single concentrate
 - No Arsenic, no penalty elements
 - Improve 27% Cu, 10 g/t Au, 100 g/t Ag concentrate grades
- Strong potential for short payback
- Expand throughput after approx. 10 years
 - Minimize footprint to streamline permitting
- Long life mine
- No infrastructure fatal flaws



Mining in Peru

Road Map to Development and Stability

Economic Overview

- A country of 33.4 million people
- One of Latin America fastest growing economies
- Rich deposits of copper, gold, silver, zinc, lead, natural gas
- Mining is the dominant sector of Economy
- It accounts for 8.5% GDP
- Mineral Exports represents 63.9% of Total exports
- Continuous economic and political stability since 1990

Peru's Investment Grade Rating

- Peru maintains investment-grade credit rating since December 2009 matching moves made by Standard & Poor's and Fitch Ratings the previous year
- Stable, credible and consistent macroeconomic policies in various administration are keys supporting factors
- Upgrade to Investment grade has brought Peru a lot of positive attention worldwide

Importance of Peru Mining Sector

- From pre-Inca times through Inca, colonial and republican periods mining has been one major activities in the country development
- Peru, one of the most extensively mineralized countries of the world.
- Peru hosts major world's mining companies, including Glencore, Freeport McMoRan, Rio Tinto, Anglo American, MMG, Teck, Chinalco and Barrick
- Peru is the world's second largest producer of copper
- Peru has 9.1% of the world's copper reserves

Leader in the Industry

- Peru is a global leader in the mining industry
- Peru welcomes foreign investment with open and stable mining regulatory environment
- Peru's clear and simply mining law and excellent geological potential attracts the largest budgets for mineral exploration and development in the world
- Peru, consistently undertakes measures to improve its business climate to attract more investment

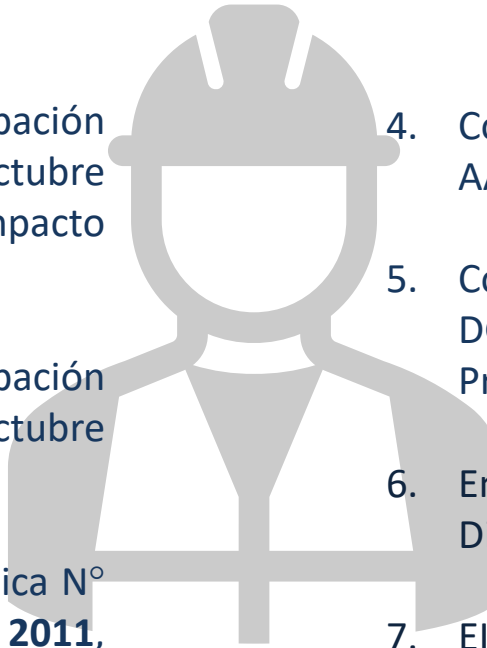
Source: EY 23 February 2023 Mining and metals investment guide

Environmental Permits Expanded September 2024

16 Years of Continuity

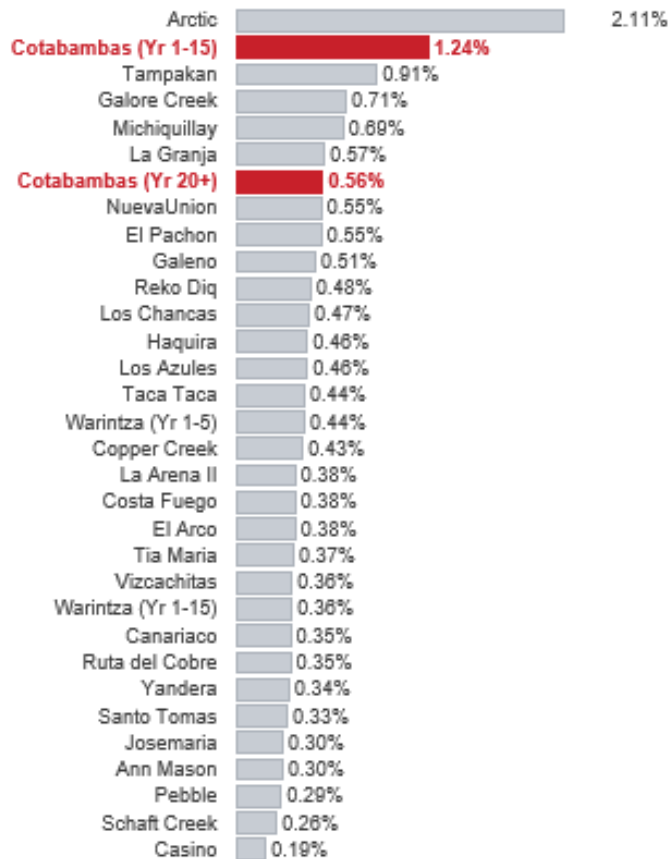


Environmental Licensing – Growth and Stability

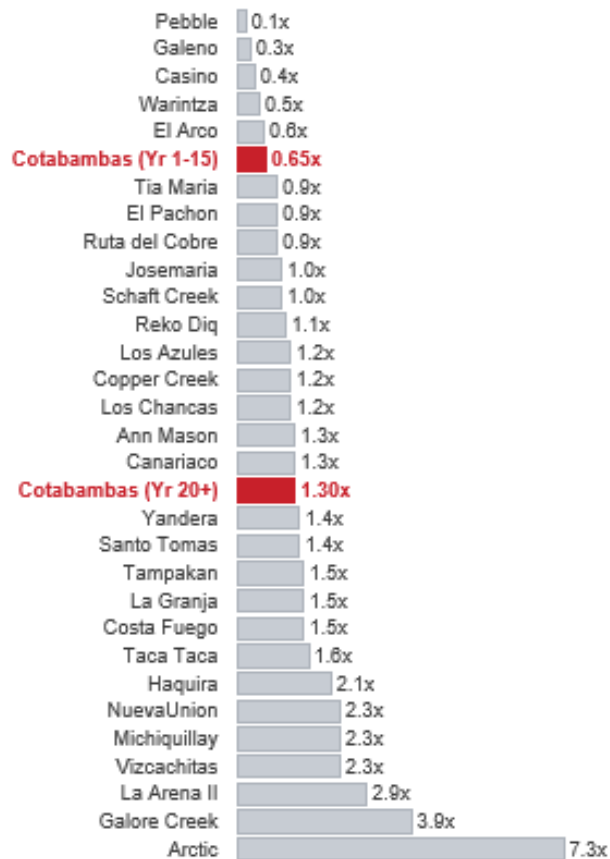
- 
1. Cotabambas-Ccalla - Constancia de Aprobación Automática N° 062-2010-MEM-AAM del 4 de octubre del **2010**, Aprobación de la Declaración de Impacto Ambiental (DIA)
 2. Cotabambas-Guacle - Constancia de Aprobación Automática N° 063-2010-MEM-AAM del 7 de octubre de **2010**, Aprobación de la DIA
 3. Cotabambas - Constancia de Aprobación Automática N° 068-2011-MEM-AAM del 10 de octubre del **2011**, Aprobación de la Modificación de la DIA
 4. Cotabambas - Resolución Directoral N° 194-2012-MEM-AAM, del 12 de junio del **2012**, Aprueba el EIA-sd
 5. Cotabambas - Resolución Directoral N° 435-2015-MEM-DGAAM, del 12 de noviembre de **2015**, Aprueba la Primera Modificación del EIA-sd
 6. Environmental Licensing Current EIA-sd - Resolución Directoral N° 147-**2018**-MEM-DGAAM
 7. EIA-sd Expanded 2024, **Valid to 2030**. Expanded from 3,100 ha to 6,500 ha including community consultations.

Strip-Adjusted Grade Benchmarking

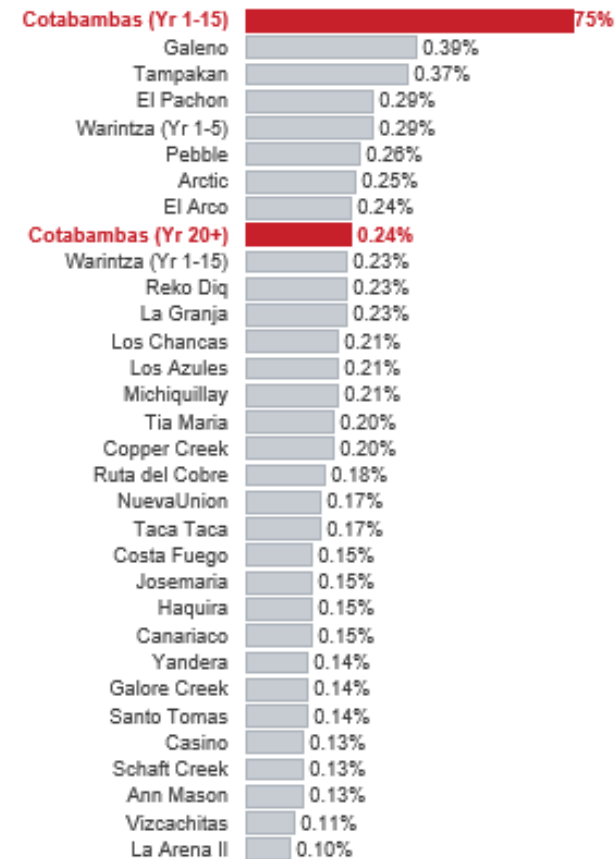
Copper Head Grade (%)



LOM Strip Ratio



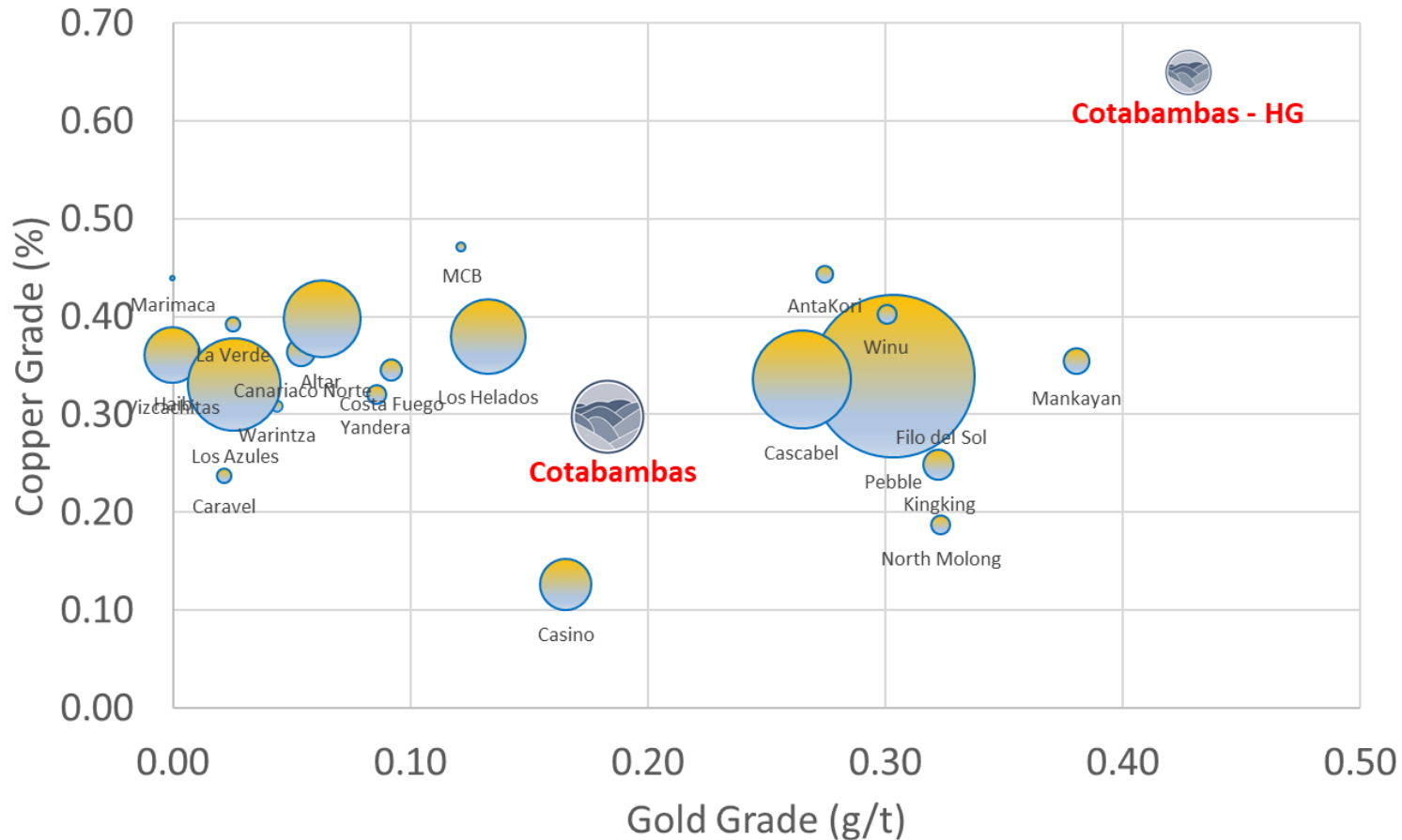
Strip-Adjusted Grade (%)⁽²⁾



Adapted from Solaris Corporate Presentation

Cotabambas figures shown in red — early-mine (Yr 1-15) and later-mine (Yr 20+) scenarios.

High-Grade Distinguishes Cotabambas




- High-Grade Component stands out
- Demonstrates the important role High-Grade will play in making the mine profitable
 - High IRR
 - Short payback
- Total Resource grade also demonstrates long life potential
- 17 of 19 targets are yet to be drilled, indicating significant resource growth potential

Social License

Community Support for Future Relocations

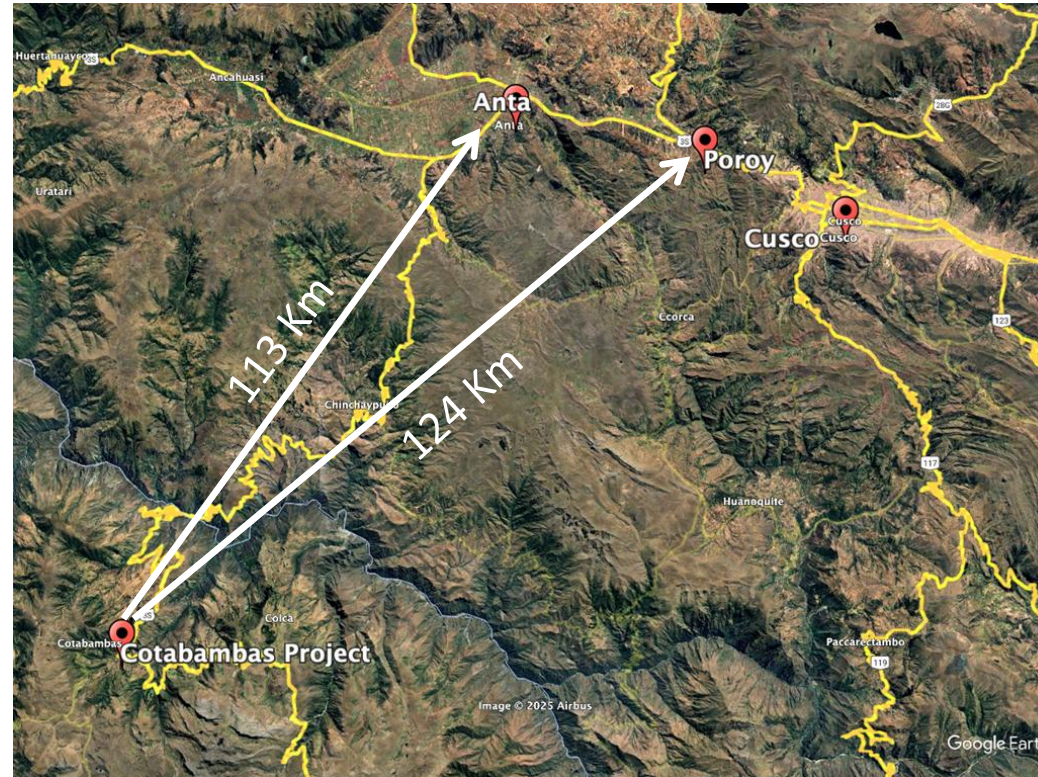
COCHAPPATTA COMMUNITY CONVENIO

9th Community Convenio at Project



- Land Purchase**
Additional Purchase
Scheduled for 2026
- Local Labor**
- Economic Support to Seniors**
- Scholarships**

LANDS ACQUIRED AND TRANSFERRED TO COMMUNITIES



Anta

- 23,500 m²
- Ccalla Community
- 2013

Poroy

- 41,000 m²
- Cochapata Community
- 2018

2026 Agreements

- Cotabambas Municipality
- Cochapata Community
- Guacile/Tamburo Community

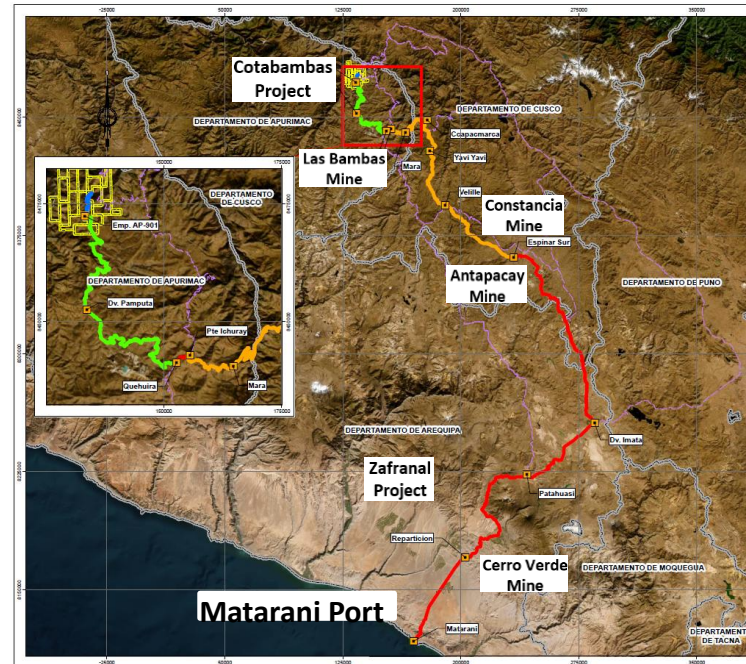
Infrastructure Improvements

Two Access Roads & Two Ports

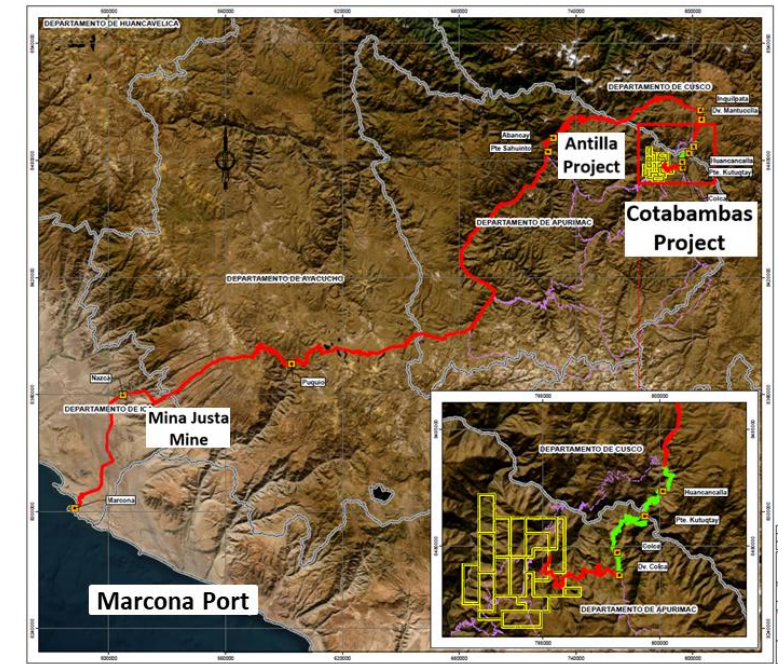


Public Bridge / Road

Existing Southern Route to Port

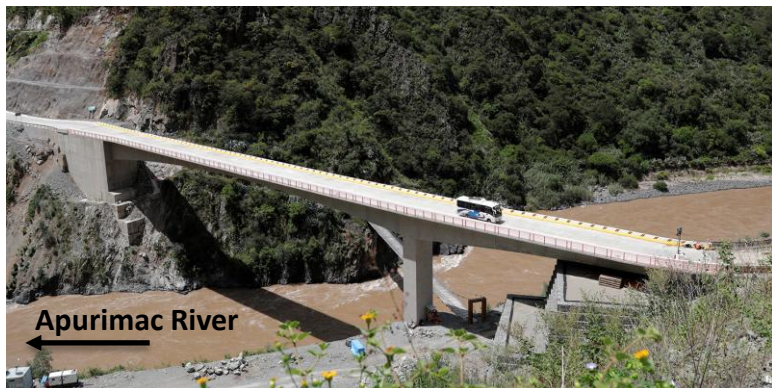


New Northern Route to Port



New Bridge and Alternate Access Road

- Derisks Potential Operational and Construction Disruptions
- 2nd Corridor for Concentrate Shipments and Construction Access
- Public access bridge/road
- Funded through 'Works for Taxes' Program
- Located 10km East of Cotabambas Project

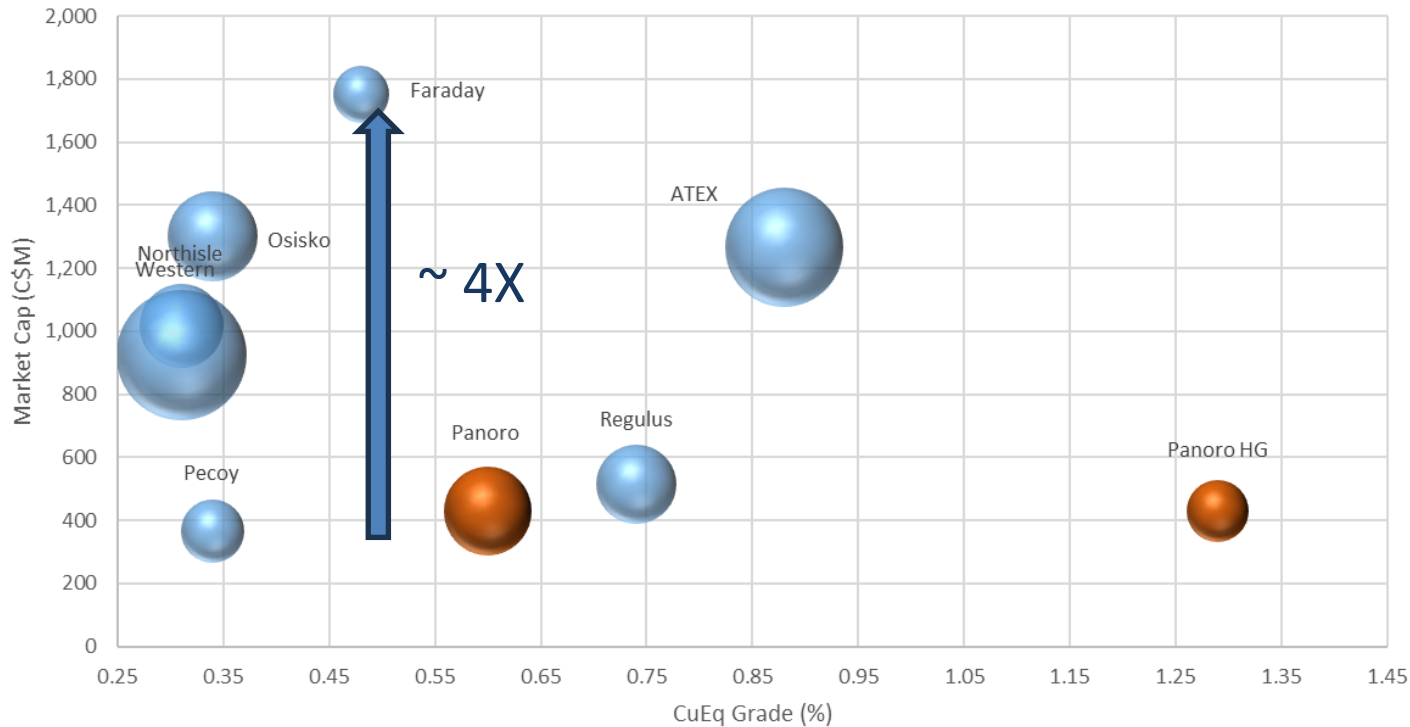


Copper Developers Valuation Comparison

Peers Trading at up to 11X Panoro Valuation



Copper Developers Valuation Comparison



Company	In-situ Value (cents CAD/lb CuEq)	M&I (%)
Faraday	34.7	84
Northisle	9.0	81
Osisko	10.0	55
Pecoy	5.7	0
Atex	5.6	24
Regulus	5.1	48
Western Cu/Au	3.4	62
PANORO	3.2	51

11X ↑

Note:

1. May 14, 2026 Share Price
2. Copper price of US\$5.00/lb, Gold price of US\$4,000/oz, Silver price of US\$60/oz, Molybdenum price of US\$25/lb

Appendix



COTABAMBAS
PROJECT

Capital Structure & Share Performance

Tickers TSX-V:PML | BVL:PML | FSE:PZM | OTC:POROF

Share Price	C\$1.45
52 Week Low-High	C\$0.28 - C\$1.50

Shares Issued	308.1 M
Options	14.9 M
Warrants	18.7 M
Compensation Options	1.3M
Fully Diluted	343.0 M

Market Capitalization

Undiluted	C\$447.0 M
Fully diluted	C\$497.0 M

Cash	C\$20.1 M
Antilla Payments	C\$9.8 M
Total	C\$29.9M



Source: money.tmx.com/en/quote/PML

TOP SHAREHOLDERS

HUDBAY

WHEATON
PRECIOUS METALS

DELBROOK
CAPITAL

Konwave AG

MACKENZIE
Investments

Management & Directors – Peru Focused



MANAGEMENT

LUQUMAN SHAHEEN, PENG, PE, MBA – PRESIDENT & CHIEF EXECUTIVE OFFICER & DIRECTOR

35 years experience in mining sector, 30 years experience in Peru and Latin America



MICHAEL MALANA, CPA, CMA – CHIEF FINANCIAL OFFICER

Over 20 years experience in accounting and financial management in the mining sector

YVES BARSIMANTOV – VICE PRESIDENT OPERATIONS & PERU GENERAL MANAGER

25 years management experience with Peruvian banking, fishing and mining sector



LUIS VELA, P.GEO., MSc.ECON.GEOLOGY – VICE PRESIDENT EXPLORATION

30 years exploration experience in Peru and Chile mining sector



GUILLERMO TORRES, P.ENG, PGEO., MBA – VICE PRESIDENT PROJECT DEVELOPMENT

Over 25 years mining experience in Peru and Latin America mining sector



CHRISTIAN PILON – SR. VICE PRESIDENT SOUTH AMERICA

Over 35 years of experience in applied geophysics and mining sector, resident in Peru. Funding Shareholder of Panoro



DIRECTORS

KEITH PECK– CHAIRMAN

Over 40 years of Sr. Investment Banking experience, advising both public and private companies on complex equity financings, fairness opinions, corporate restructurings, takeover bids, and business valuations and holds a BA in Economics from Princeton and is a Chartered Business Valuator

AUGUSTO BAERTL– CHAIRMAN EMERITUS

Over 55 years of experience in the Peruvian and International Mining Sector. CEO of Antamina through engineering, permitting and construction



WILLIAM BODEN, CPA,CA – DIRECTOR

Former Chairman of First Coal Corporation, Chairman of Audit Committee

ANDREW KAIP– DIRECTOR

Over 30 years of experience in the mining sector and capital markets including over a decade working on exploration projects throughout the Americas, Andrew is one of the top ranked equity analysts in the mining sector

ANTHONY LAUB – DIRECTOR

Partner at LQG Energy & Mining Consulting



CHRISTIAAN STAARGAARD, MSc – DIRECTOR

Over 45 years experience in exploration including as a Director or Senior Officer of public companies since 1990

Other Assets of Panoro Minerals

Financing Options & Future Potential



ANTILLA PROJECT, PERU

- Payment #3 - C\$7 M, June 2026
- Payment #4 – up to \$50 M
- 10% Equity in Antilla Project
- NSR Royalty
 - 2% NSR \$5 M purchase option
 - Additional 1% NSR if PML diluted to below 5% equity in Antilla
 - 1% NSR Buyback to close May 2026 @ US\$2.0M

COPPER PORPHYRY PROJECTS, PERU

- Humamantata Project
- Promesa Project
- Anyo Project
- All project located in Southern Peru Copper Belt
- Geophysics, geochemistry

PANORO

MINERALS LTD



COTABAMBAS
PROJECT

TSXV:PML

OTCQB:POROF

BVL:PML

BORSE:PZM

For further information, contact:

Luquman Shaheen, President and CEO

Phone: 604.684.4246

Email: info@panoro.com

www.panoro.com